

**OFICIUL DE STAT PENTRU INVENȚII
ȘI MĂRCI BUCUREȘTI ROMÂNIA**

**CERERI DE ÎNREGISTRARE A
DESENELOR ȘI MODELELOR**

PUBLICATE ÎN

DATA DE 20/08/2018

**CLASA 10 - CEASORNICĂRIE ȘI ALTE
INSTRUMENTE DE MĂSURĂ, INSTRUMENTE DE
CONTROL SAU DE SEMNALIZARE**

(21) f 2018 0171; (22) 12/02/2018; (43) 20/08/2018; (71) TOVARYSTVO Z OMEZHENOIU VIDPOVIDALNISTIU "TIRAS-12", 2-YI PROV. KHMELNYTSKESHOSE 8, VINNITSIA, 21021, UCRAINA; (74) HALYNA DRAHOBETSKA, PATENT ATTORNEY OF UKRAINE, P.O. BOX 5204, VINNITSIA, 21021, UCRAINA; (72) KONONKO OLEKSANDR MYKOLAIOVYCH, VUL.KOSMONAVTIV, 16 KV.40, VINNITSIA, 21021, UCRAINA; (54) CARCASĂ PENTRU DISPOZITIV DE ALARMĂ AUTOMATĂ; (28) 3; (51) 10-05; (80) DM/100 351 / 12/02/2018 / 17/08/2018;



(21) f 2016 0110-1.3



(21) f 2016 0110-1.4



(21) f 2016 0110-1.5



(21) f 2016 0110-1.6



(21) f 2016 0110-1.7

**CLASA 12 - MEANS OF TRANSPORT OR
HOISTING**

(21) f 2016 0110; (22) 13/04/2016; (43) 20/08/2018; (71) FORD GLOBAL TECHNOLOGIES LLC, 330 TOWN CENTER DRIVE, SUITE 800, MI, DEARBORN, 48126, US, STATELE UNITE ALE AMERICII; (74) NESTOR NESTOR DICULESCU KINGSTON PETERSEN CONSILIERE ÎN PROPRIETATE INTELECTUALĂ S.R.L., BUCHAREST BUSINESS PARK, ȘOSEAUA BUCUREȘTI - PLOIEȘTI NR. 1A, INTRAREA A, ET. 4, SECTOR 1, BUCUREȘTI, BUCUREȘTI, BUCUREȘTI; (72) GIACHIN ROBERTO, MARIENBURGER STRASSE 9, ZUELPICH, 53909, DE, GERMANIAMESSALE CLAUDIO, NEMETERSTRASSE 18, KOELN, 50996, DE, GERMANIA; (54) EXTERIOR AUTOVEHICUL; (28) 1; (51) 12-08, 12-15;



(21) f 2016 0110-1.1

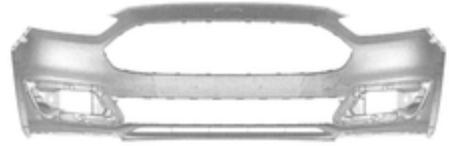


(21) f 2016 0110-1.2

(21) f 2016 0111; (22) 13/04/2016; (43) 20/08/2018; (71) **FORD GLOBAL TECHNOLOGIES LLC**, 330 TOWN CENTER DRIVE, SUITE 800, MI, DEARBORN, 48126, US, STATELE UNITE ALE AMERICII; (74) **NESTOR NESTOR DICULESCU KINGSTON PETERSEN CONSILIERE ÎN PROPRIETATE INTELECTUALĂ S.R.L.**, BUCHAREST BUSINESS PARK, ȘOSEAUA BUCUREȘTI - PLOIEȘTI NR. 1A, INTRAREA A, ET. 4, SECTOR 1, BUCUREȘTI, BUCUREȘTI, BUCUREȘTI; (72) **MESȘALE CLAUDIO**, NEMETERSTRASSE 18, KOELN, 50996, DE, GERMANIAGIACHIN ROBERTO, MARIENBURGER STRASSE 9, ZUELPICH, 53909, DE, GERMANIA; (54) **PĂRȚI COMPONENTE AUTOVEHICUL**; (28) 6; (51) 12-16;



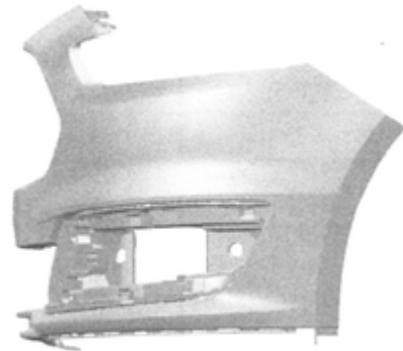
(21) f 2016 0111-1.4



(21) f 2016 0111-1.5



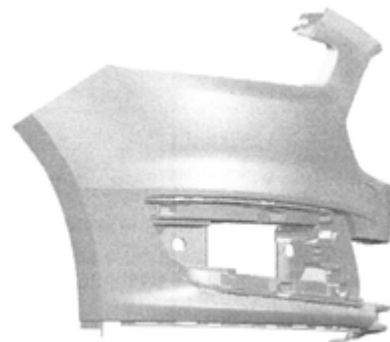
(21) f 2016 0111-1.1



(21) f 2016 0111-1.6



(21) f 2016 0111-1.2



(21) f 2016 0111-1.7



(21) f 2016 0111-1.3



(21) f 2016 0111-1.8



(21) f 2016 0111-1.9



(21) f 2016 0111-2.1



(21) f 2016 0111-2.2



(21) f 2016 0111-2.3



(21) f 2016 0111-2.4



(21) f 2016 0111-2.5



(21) f 2016 0111-2.6



(21) f 2016 0111-2.7



(21) f 2016 0111-2.8



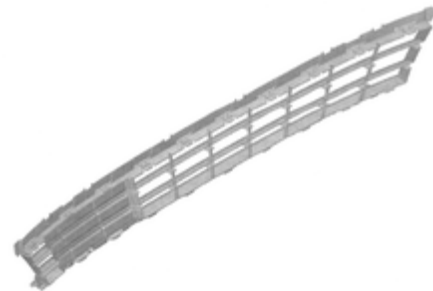
(21) f 2016 0111-2.9



(21) f 2016 0111-3.1



(21) f 2016 0111-3.2



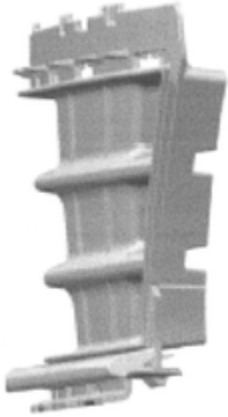
(21) f 2016 0111-3.3



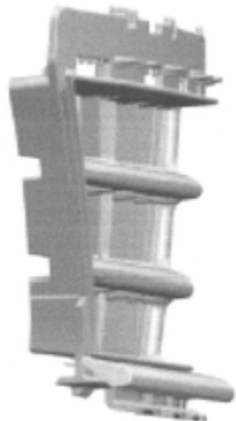
(21) f 2016 0111-3.4



(21) f 2016 0111-3.5



(21) f 2016 0111-3.6



(21) f 2016 0111-3.7



(21) f 2016 0111-3.8



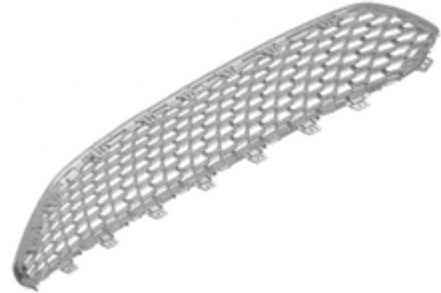
(21) f 2016 0111-3.9



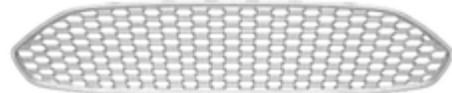
(21) f 2016 0111-4.1



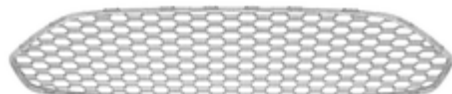
(21) f 2016 0111-4.2



(21) f 2016 0111-4.3



(21) f 2016 0111-4.4



(21) f 2016 0111-4.5



(21) f 2016 0111-4.6



(21) f 2016 0111-4.7



(21) f 2016 0111-4.8



(21) f 2016 0111-4.9



(21) f 2016 0111-5.1



(21) f 2016 0111-5.2



(21) f 2016 0111-5.3



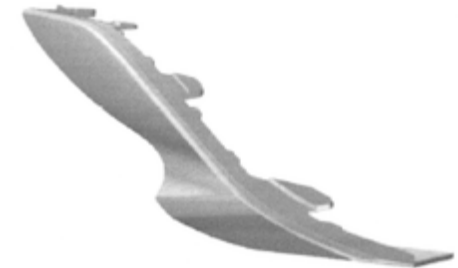
(21) f 2016 0111-5.4



(21) f 2016 0111-5.5



(21) f 2016 0111-5.6



(21) f 2016 0111-5.7



(21) f 2016 0111-5.8



(21) f 2016 0111-5.9



(21) f 2016 0111-6.1



(21) f 2016 0111-6.2



(21) f 2016 0111-6.3



(21) f 2016 0111-6.4



(21) f 2016 0111-6.5



(21) f 2016 0111-6.6



(21) f 2016 0111-6.7



(21) f 2016 0111-6.8



(21) f 2016 0111-6.9
