

**OFICIUL DE STAT PENTRU INVENȚII
ȘI MĂRCI BUCUREȘTI ROMÂNIA**

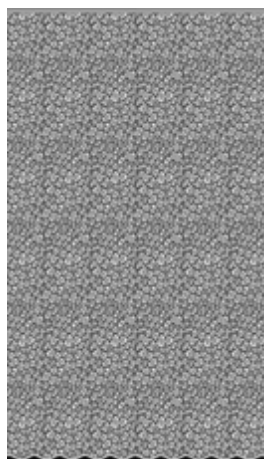
**CERERI DE ÎNREGISTRARE A
DESENELOR ȘI MODELELOR**

PUBLICATE IN

DATA DE 18/05/2017

CLASA 06 - MOBILIER

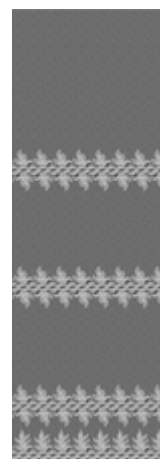
(21) f 2017 0143; (22) 11/05/2017; (43) 18/05/2017; (71) S.C. NGM LEONARD PAȘCANI, STR. FĂNTÂNELE NR. 13-17, 705200, PAȘCANI, ROMANIA; (72) MANOLACHIOAIA TAMARA SIMONA, STR. BISERICII, NR 20, 705200, PAȘCANI, ROMANIA; CONSTANTIN MIRELA GABRIELA, STR. IZVOARELOR, NR. 5, BL C23, ET 2, AP.9, 705200, PAȘCANI, ROMANIA; (54) **PERDEA 430, PERDEA 178, PERDEA 201, PERDEA 205, PERDEA 206, PERDEA 208, PERDEA 243, PERDEA 244, PERDEA 431, PERDEA 285, PERDEA 4;** (28) 48; (51) 06 -10;



(21) f 2017 0143-1.1



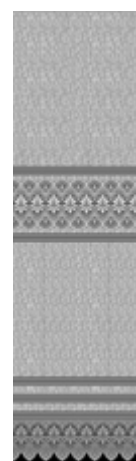
(21) f 2017 0143-2.1



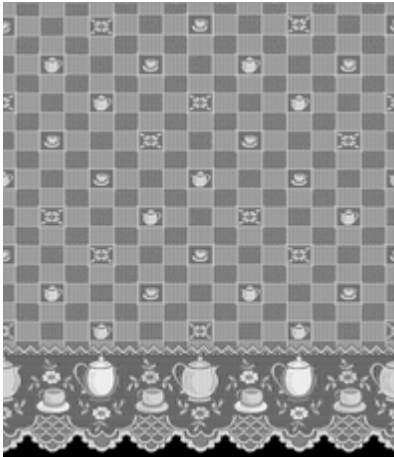
(21) f 2017 0143-3.1



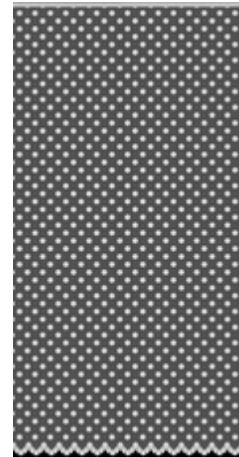
(21) f 2017 0143-4.1



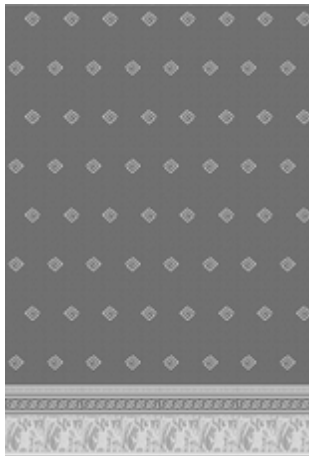
(21) f 2017 0143-5.1



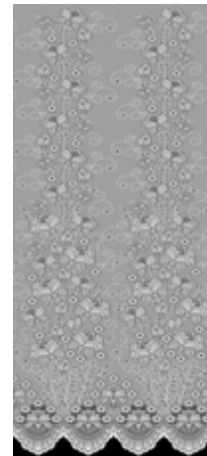
(21) f 2017 0143-6.1



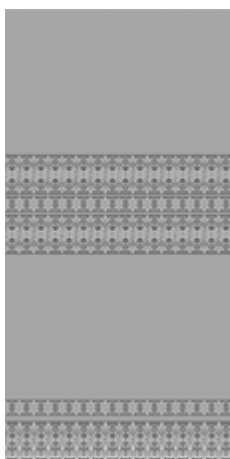
(21) f 2017 0143-9.1



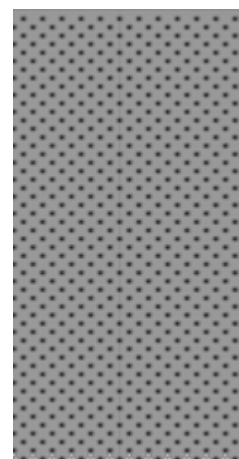
(21) f 2017 0143-7.1



(21) f 2017 0143-10.1



(21) f 2017 0143-8.1



(21) f 2017 0143-11.1



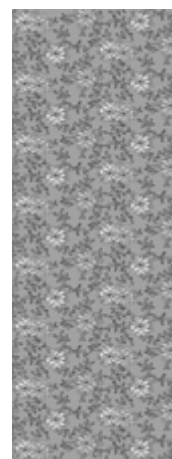
(21) f 2017 0143-12.1



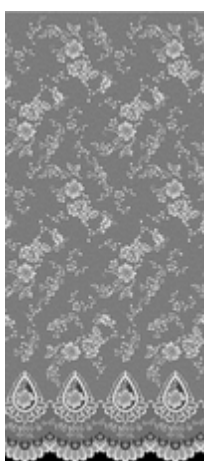
(21) f 2017 0143-15.1



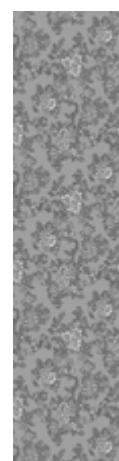
(21) f 2017 0143-13.1



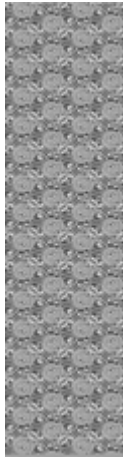
(21) f 2017 0143-16.1



(21) f 2017 0143-14.1



(21) f 2017 0143-17.1



(21) f 2017 0143-18.1



(21) f 2017 0143-21.1



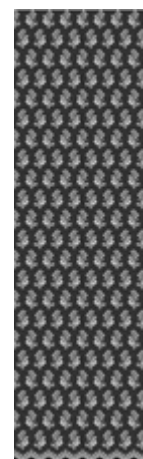
(21) f 2017 0143-19.1



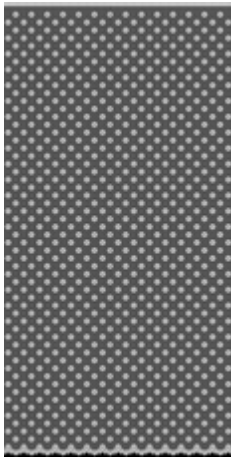
(21) f 2017 0143-22.1



(21) f 2017 0143-20.1



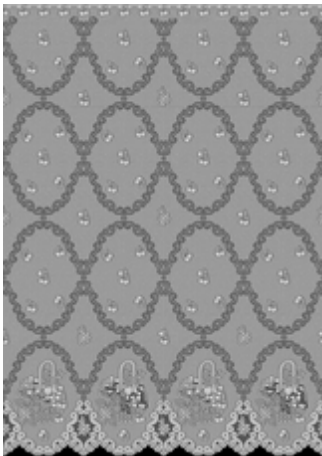
(21) f 2017 0143-23.1



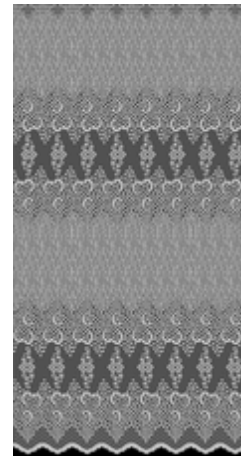
(21) f 2017 0143-24.1



(21) f 2017 0143-27.1



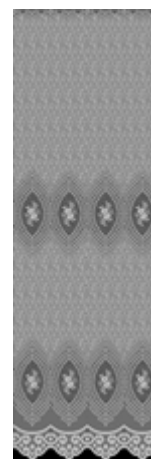
(21) f 2017 0143-25.1



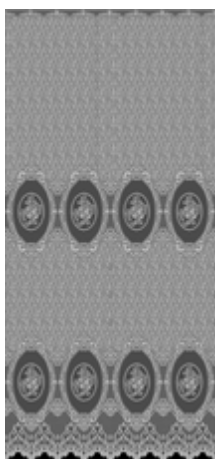
(21) f 2017 0143-28.1



(21) f 2017 0143-26.1



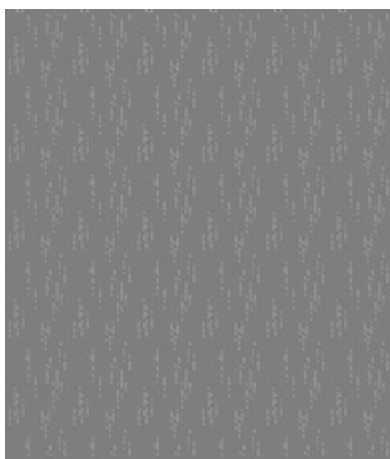
(21) f 2017 0143-29.1



(21) f 2017 0143-30.1



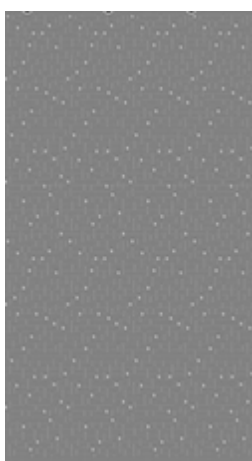
(21) f 2017 0143-33.1



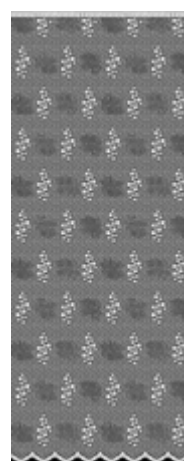
(21) f 2017 0143-31.1



(21) f 2017 0143-34.1



(21) f 2017 0143-32.1



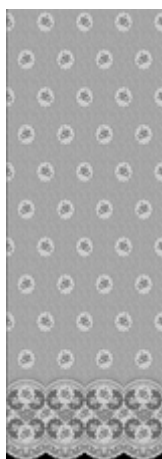
(21) f 2017 0143-35.1



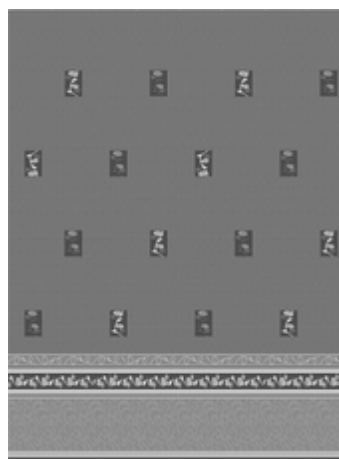
(21) f 2017 0143-36.1



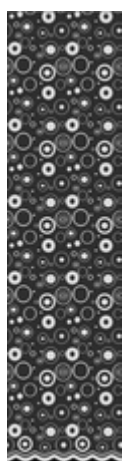
(21) f 2017 0143-39.1



(21) f 2017 0143-37.1



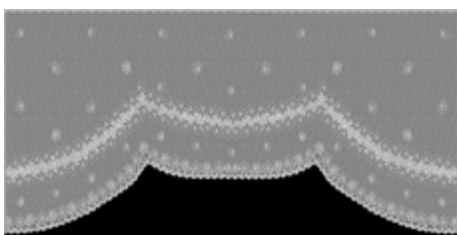
(21) f 2017 0143-40.1



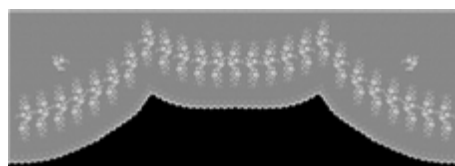
(21) f 2017 0143-38.1



(21) f 2017 0143-41.1



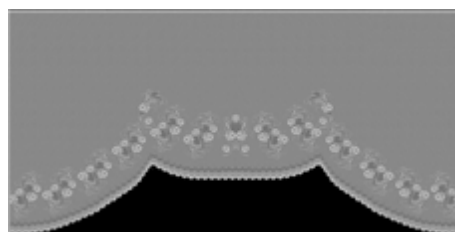
(21) f 2017 0143-42.1



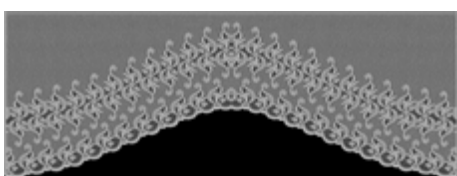
(21) f 2017 0143-45.1



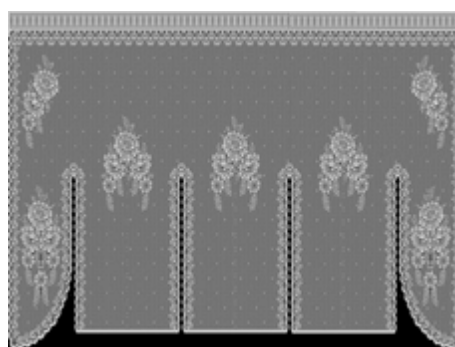
(21) f 2017 0143-43.1



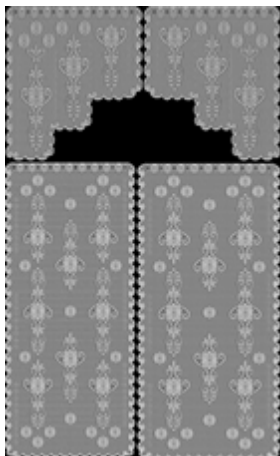
(21) f 2017 0143-46.1



(21) f 2017 0143-44.1

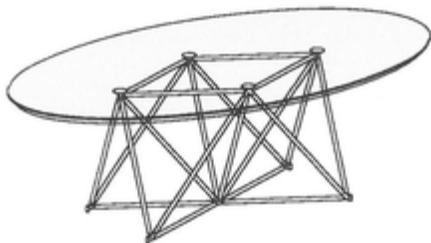


(21) f 2017 0143-47.1



(21) f 2017 0143-48.1

(21) f 2017 0145; (22) 12/05/2017; (43) 18/05/2017; (71) **PAUL MIHAI MOLDOVAN**, STR. CONSTANTIN NOICA NR.8, AP. 12, 406495 CLUJ-NAPOCA ROMANIA; **ANAMARIA MOLDOVAN**, STR. CONSTANTIN NOICA NR.8, AP. 12, 406495, CLUJ-NAPOCA, ROMANIA; (72) **PAUL MIHAI MOLDOVAN**, STR. CONSTANTIN NOICA NR.8, AP. 12, 406495, CLUJ-NAPOCA, ROMANIA; **ANAMARIA MOLDOVAN**, STR. CONSTANTIN NOICA NR.8, AP. 12, 406495, CLUJ-NAPOCA, ROMANIA; (54) **POLIMASA**; (28) 1; (51) 06 -03; (57) **model 1** - PoliMasa se compune din 2 elemente: 1 Blatul în formă de elipsă poate fi din lemn și derivate de diferite esențe cu diferite tratamente, piatră, sticlă, oțel, materiale compozite. 2 Structura poligonală care susține blatul se compune din 20 baghete cilindrice cu capete hemisferice și lungimi variabile, din lemn de diferite esențe și 9 noduri tridimensionale din tablă de oțel din care 4, la bază, au sistem de reglare pe înălțime. Structura descrie în spațiu următoarele forme geometrice: 1 romb la (partea superioară), 12 triunghiuri, un x (la partea inferioară).



(21) f 2017 0145-1.1

CLASA 10 - CEASORNICĂRIE ȘI ALTE INSTRUMENTE DE MĂSURĂ, INSTRUMENTE DE CONTROL SAU DE SEMNALIZARE

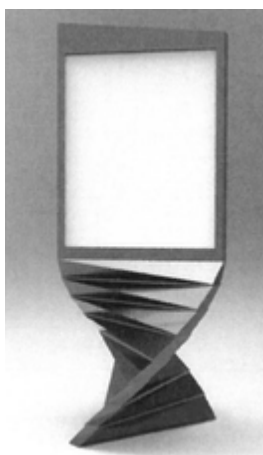
(21) f 2017 0146; (22) 13/03/2017; (43) 18/05/2017; (71) **CHANEL**, AVENUE CHARLES DE GAULLE NR. 135, F 92200 NEUILLY SUR SEINE FRANȚA; (72) **NITSCH MARIANNA**, 135 AVENUE CHARLES DE GAULLE, 92200 NEUILLY-SUR-SEINE, FRANȚA; (54) **CEASURI DEMÂNĂ**; (28) 6; (51) 10 -02, 10 -07; (80) DM/095 837 /13/03/2017 / 12/05/2017;

CLASA 13 - APARATE PENTRU INTRODUCEREA, DISTRIBUȚIA SAU TRANSFORMAREA ENERGIEI ELECTRICE

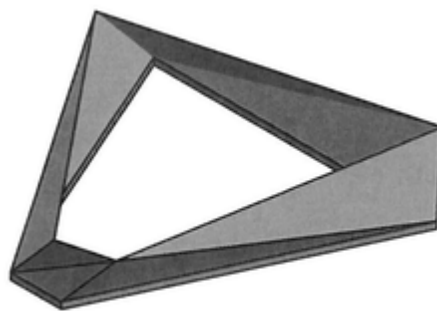
(21) f 2017 0147; (22) 04/11/2016; (43) 18/05/2017; (71) **DERNEK GRUP ELEKTRIK ELEKTRONIK DIŞ TICARET VE SANAYI LIMITED ŞİRKETI**, ISTANBUL TRAKYA SERBEST BOLGESI, FERHATPAŞA SB MAHALLESİ, SUMBUL SOKAK, NO: 5/41, CÂTALCA - ISTANBUL TURCIA; (74) **DESTEK PATENT ANONIM ŞİRKETI**, LEFKOŞE CADDESİ, NM OFIS PARK B BLOK NO:36/5, BEŞEVLER-NİLUFER, TR-16110 BURSA TURCIA; (72) **TUNCAY CEYRAN**, ISTANBUL TRAKYA SERBEST BOLGESI FERHATPAŞA SB MAH. SUMBUL SK. NO:5/41, CÂTALCA - ISTANBUL TURCIA; (54) **PRIZE ȘI ÎNTRERUPĂTOARE ELECTRICE**; (28) 5; (51) 13 -03; (80) DM/095 869 / 04/11/2016 / 12/05/2017;

CLASA 20 - ECHIPAMENTE PENTRU VÂNZĂRI ȘI PUBLICITATE, SEMNE INDICATOARE

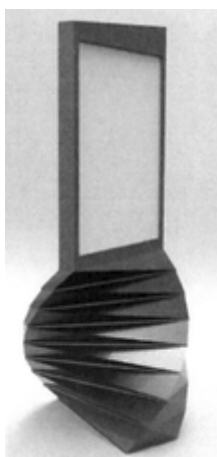
(21) f 2017 0148; (22) 15/05/2017; (43) 18/05/2017; (71) **SC KARTEZIAN SRL**, STR. ȚUTEA PETRE NR. 5, BL. 909, TR 1, ET. 3, AP. 11, 700730, IAȘI, ROMANIA; (74) **C.I.P.I. NEAGU CĂTĂLIN**, STR. ȚUTEA PETRE NR. 5, BL. 909, TR 1, ET. 3, AP. 11, 700730, IAȘI, ROMANIA; (72) **CĂTĂLIN NEAGU**, STR. ȚUTEA PETRE NR. 5, BL. 909, TR 1, ET. 3, AP. 11, 700730, IAȘI, ROMANIA; (54) **PANOURI PUBLICITARE ȘI ELEMENTE COMPONENTE**; (28) 3; (51) 20 -03;



(21) f 2017 0148-1.1



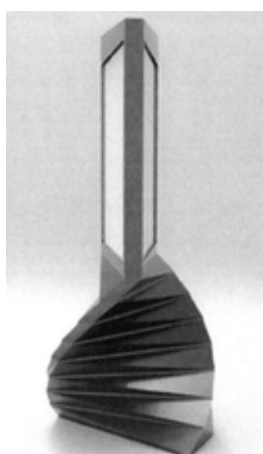
(21) f 2017 0148-2.1



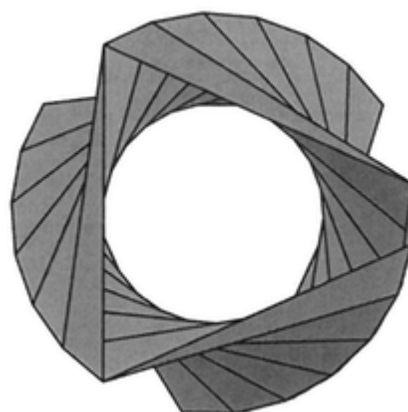
(21) f 2017 0148-1.2



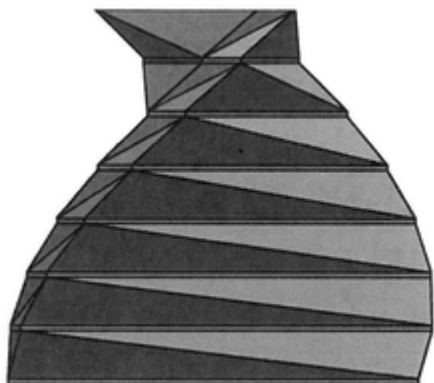
(21) f 2017 0148-2.2



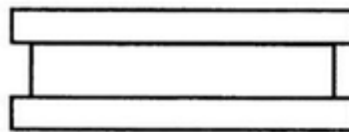
(21) f 2017 0148-1.3



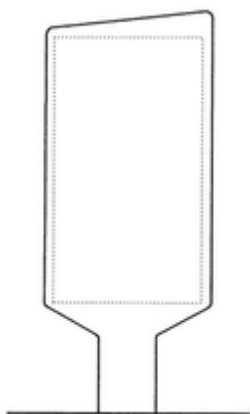
(21) f 2017 0148-2.3



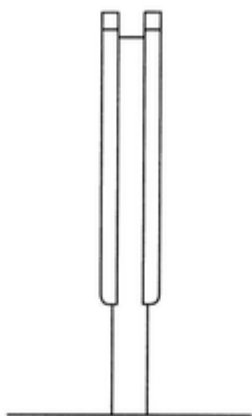
(21) f 2017 0148-2.4



(21) f 2017 0148-3.3



(21) f 2017 0148-3.1



(21) f 2017 0148-3.2